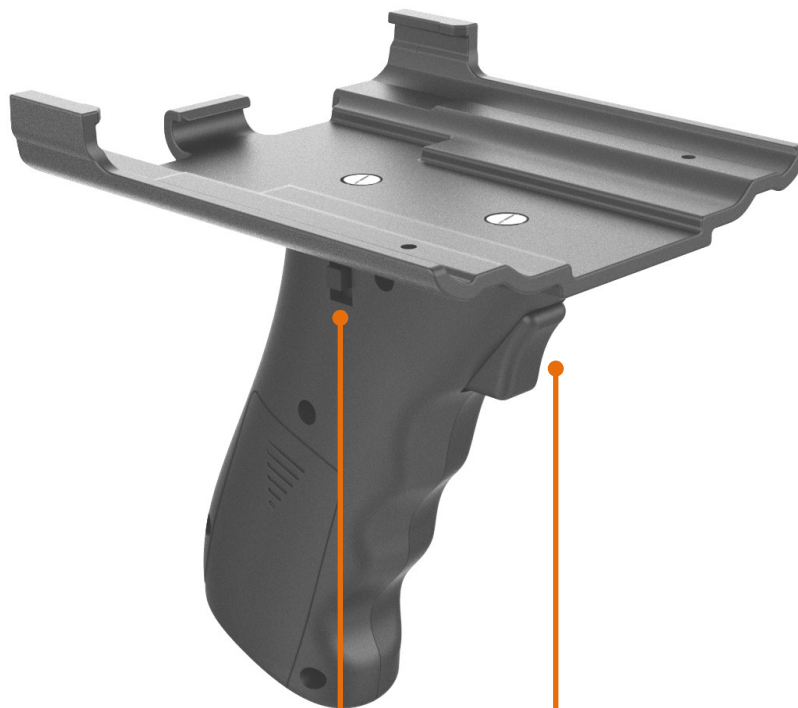


SCORPION 6" Pistol Grip

SCORPION 
RUGGED TABLET & HANDHELD SOLUTIONS

NOTE: If you have purchased the Scorpion 60 + Pistol Grip **as a set** from BRESSNER Technology, then the Bluetooth-pairing and the BLE-Handle-software installation / -setup usually was done already by Bressner.

- › Just boot up the Scorpion 60 and switch on the Pistol Grip
- › Start scanning.



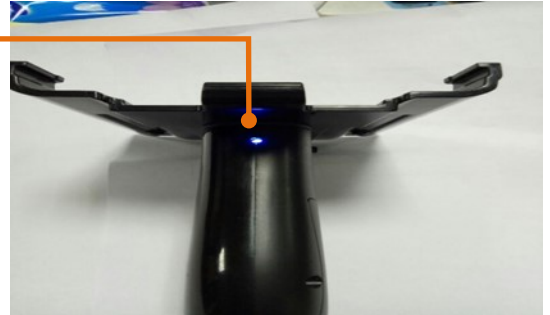
1. Button / switch information

- › **Power switch:** Turn on/off the Pistol Grip.
- › **Scanner button (Trigger):**
When the Pistol Grip was connected with the Scorpion 60 handheld successfully, then press this button to activate the scanner. (Scan a 1D-/2D-code)

SCORPION 6" Pistol Grip

2. LED light information

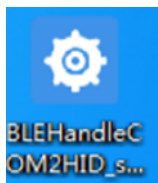
- › **LED light off:**
 - A) Pistol Grip is on and paired, but currently in power saving mode.
 - B) Pistol Grip is switched off completely.
- › **LED light on:**
Pistol Grip is successfully connected with handheld and active.
- › **LED light is flashing at 1 sec. Interval (flashing slowly):**
Pistol Grip is switched on, but is **not** connected successfully.
- › **LED light is flashing at 0.5 sec. Interval (flashing fast):**
The Pistol Grip pairing was cleared and the Pistol Grip is ready to connect with the next SCORPION 6" device. (Waiting for new Bluetooth pairing)



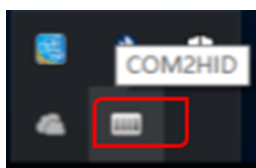
3. Scan Application

NOTE: This application works only with the Win10-Version of the Scorpion 60.

- › **For Android, please go to Topic 5.5 directly (last page).**
1. Copy the installation package (BLEHandleCOM2HID_setup_x86.exe /x64.exe) to the SCORPION 6" device and run the setup.exe as administrator.
 2. When the installation has finished, reboot the handheld.



3. Disable the "Tablet Mode" - then you can find this new icon on the bottom status bar.



Shortcut icon for COM2HID

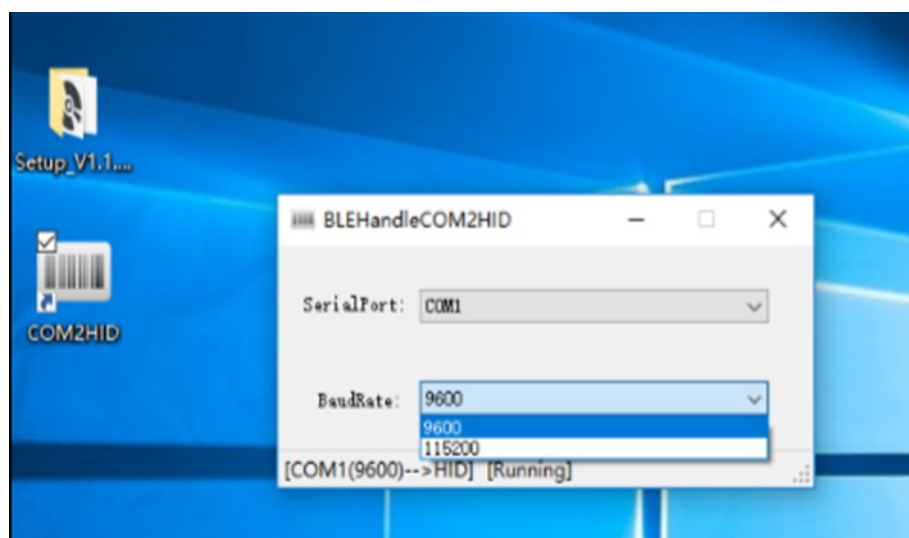
SCORPION 6" Pistol Grip

4. Use the shortcut icon in the task bar to open the BLEHandleCOM2HID settings GUI. Please set the following values, depending on your integrated scanner model:

Serial Port: **COM1** (= default)

BaudRate: For 1D-scanner module choose **9600**

For 2D-scanner module choose **115200**



4. Bluetooth-Pairing of Pistol Grip" and SCORPION 6" Handheld

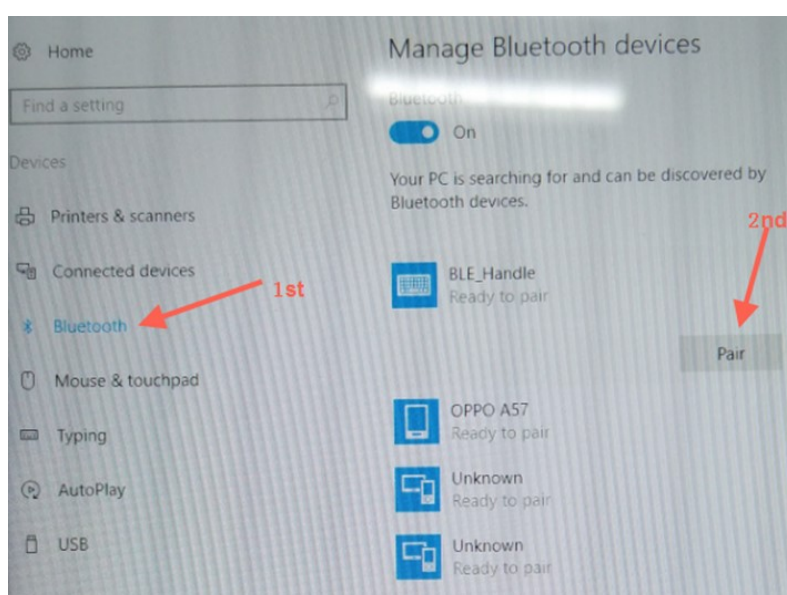
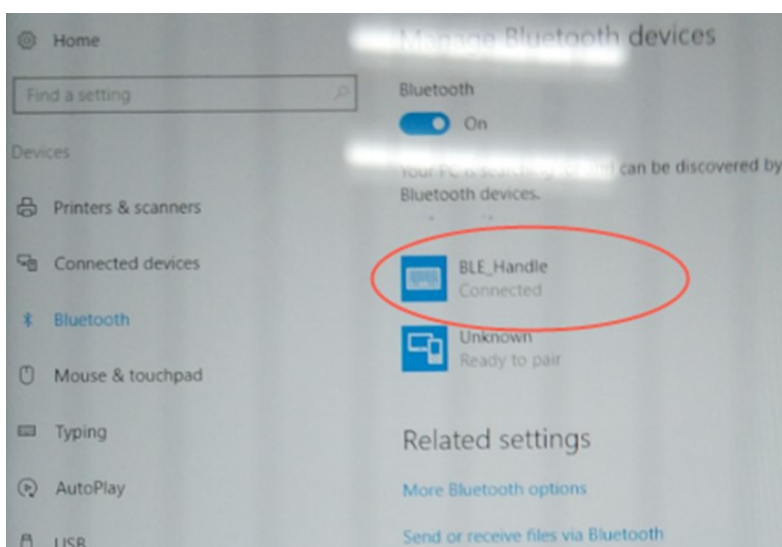
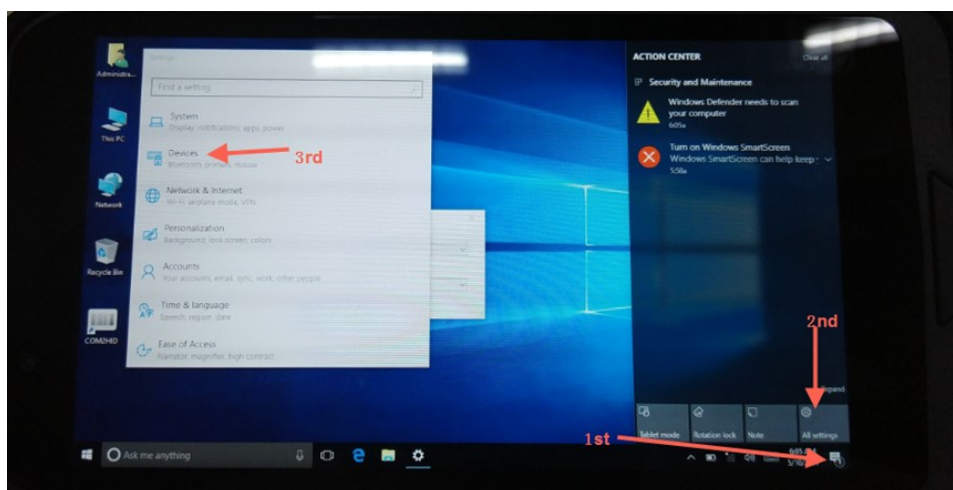
NOTE: This procedure is only necessary once, if the Pistol Grip has not yet been paired with your SCORPION 6" device before - or when the Pistol Grip must be connect to another handheld device.

1. Set the Pistol Grip into Pairing Mode:
 - 1.1 Press and hold the scan key (trigger button) while turning on the power switch.
 - 1.2 Keep on pressing the scan key (trigger button) until the blue LED switches from slowly flashing (1 sec interval) to faster flashing (0.5 sec interval). This indicates that the previous paired device has been cleared successfully.
 - 1.3 Now you can release the scan button. The Pistol Grip is ready for new pairing.
2. Win10: Choose: Settings → Devices → Bluetooth and other Devices → Add Bluetooth Device
3. A device named **"BLE_Handle"** should appear in the list of available devices. Choose "BLE_Handle" and then "Connect". No password is required.
4. When "connected" is displayed, the Pistol Grip is successfully connected and paired for automatic connection from now on.
The blue LED light now is not blinking anymore (= continuously on).
5. Press the scan key (trigger button) and the scanner will be activated. The scanner activates the aimer light → start scanning barcodes. The aimer light will turn off when a code was detected /scanned or when a timeout period has passed without detection of a code.
6. After this pairing procedure, this Pistol Grip and this SCORPION 6" will always connect to each other automatically, when both are powered on.

SCORPION 6" Pistol Grip

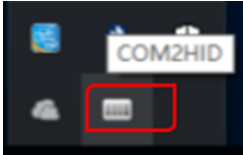
SCORPION
RUGGED TABLET & HANDHELD SOLUTIONS

Screenshots:



5. Frequently Asked Questions

1. What if the icon „BLEHandle COM2HID“ does not exist in the bottom status bar?



Restart the handheld or click on the **“scan application shortcut icon”** (desktop) to restart the application.

2. What if the icon “BLEHandle COM2HID” is shown twice in the bottom status bar?

Click on the icon to clear the duplicate icon.

3. After successful Bluetooth connection (pairing) and restarting of the Win10/handheld, the blue handle LED-light shows the flashing state for about 50 seconds. Then the LED turns off. What to do?

- › This is a normal behavior. The blinking phase is typical for the automatic connection process. After that, the Pistol Grip will automatically enter the power saving mode, when it is not used. (LED light = off).
- › Press the scan key to **wake up** the handle, and the handle will automatically reconnect with the SCORPION Device. LED light keep on status means reconnection was successful.
- › On the next pressing of the scan key (trigger button) the scanner will be activated.
- › It is not necessary to turn off the Pistol Grip completely during short breaks. The Pistol Grip will enter the power saving mode automatically if it is not used. Wake up from power save mode is faster, than (automatic) connection after switching on via power switch.

4. The “BLEHandle COM2HID application” is requesting administrative rights, every time when the user has logged on. (UAC popup).

The “BLEHandle COM2HID application” asks for the password of an admin-user (UAC popup) , every time when the user has logged on.

The “BLEHandle COM2HID application” is not working when a user was logged on with user rights (no admin rights).

This is a known limitation of this software. This software needs administrative rights for the logged in user, to work properly. If your policy does not allow normal users having administrative rights, then please contact our support via mail for assistance. (ipcsupport@bressner.de)

SCORPION 6" Pistol Grip

5. The software package (BLEHandleCOM2HID_setup_x86.exe /x64.exe) is only for installation on “Scorpion 60 Windows” version.

For “Scorpion 60 Android” just do the pairing with the Pistol Grip via the Bluetooth settings interface. There is also a scanner -app installed, which can be used for the typical barcode scanner configuration (prefix, suffix etc.).

